

# PROFESSIONAL CERAMIC TOOL MANUFACTURER

匠心制造，全球共享



## 佛山市南海协进磨具有限公司

地址：广东省佛山市南海区西樵镇民乐儒林开发区广华大院

电话/传真：+86 757-86863955 86889108 86863966

江西厂址：江西省高安市新街陶瓷厂江豪百货后

电话：0795-5451128

网址：<http://www.fsxiejin.com>

## Foshan Nanhai Xiejin Abrasive Tool Co., Ltd

Add: Guanghua industrial park, Minle Rulin development area, Xiqiao town, Foshan, Guangdong, China.

Tel: +86 757-86863955 86889108 86863966

Web: <https://xjabrasive.en.alibaba.com>



Visit our english website by scanning



Company  
profile  
公司简介

佛山市南海协进磨具有限公司是一家集技术研发、制造、生产、服务为一体综合型陶瓷磨具制造企业。我厂主要生产金刚磨块、普通磨块、弹性磨块、金刚石辊刀、金刚石磨边轮、金刚石倒角轮、金刚石修边轮等陶瓷磨具产品。多年来与知名厂商建立稳定的合作关系，赢得了广大客户的信赖，我们的团队正在不断的进取，为顾客更高的要求奋斗着。协进磨具坚持“品质第一，不断改善、克勤克俭、永续经营”的经营方针、“专注品质创新，追求卓越未来”的发展方向，注重生产过程化，坚持追求“零缺陷”为目标。以“立足南海、面向中国、走进国际”为发展战略思想，营造“团队、诚信、务实、创新”的企业精神与企业文化，以“助您成功、共同发展”为目的，共同推动中国的陶瓷磨具行业走向一个又一个巅峰。

Foshan Nanhai Xiejin Abrasive Tool Co., Ltd is a comprehensive ceramic abrasive manufacturer that integrates R & D of technology, manufacturing, production and service for more than 20 years . With 14000 square meters of production plant , strong team for technical support engineering , we provide professional , high quality of products and continuously excellent technical service. We have been trusted and working with well-known manufacturer for more than 10 years , we believe with our reasonable price , high quality products and excellent technical service team, will bring both of us long term cooperation and business.



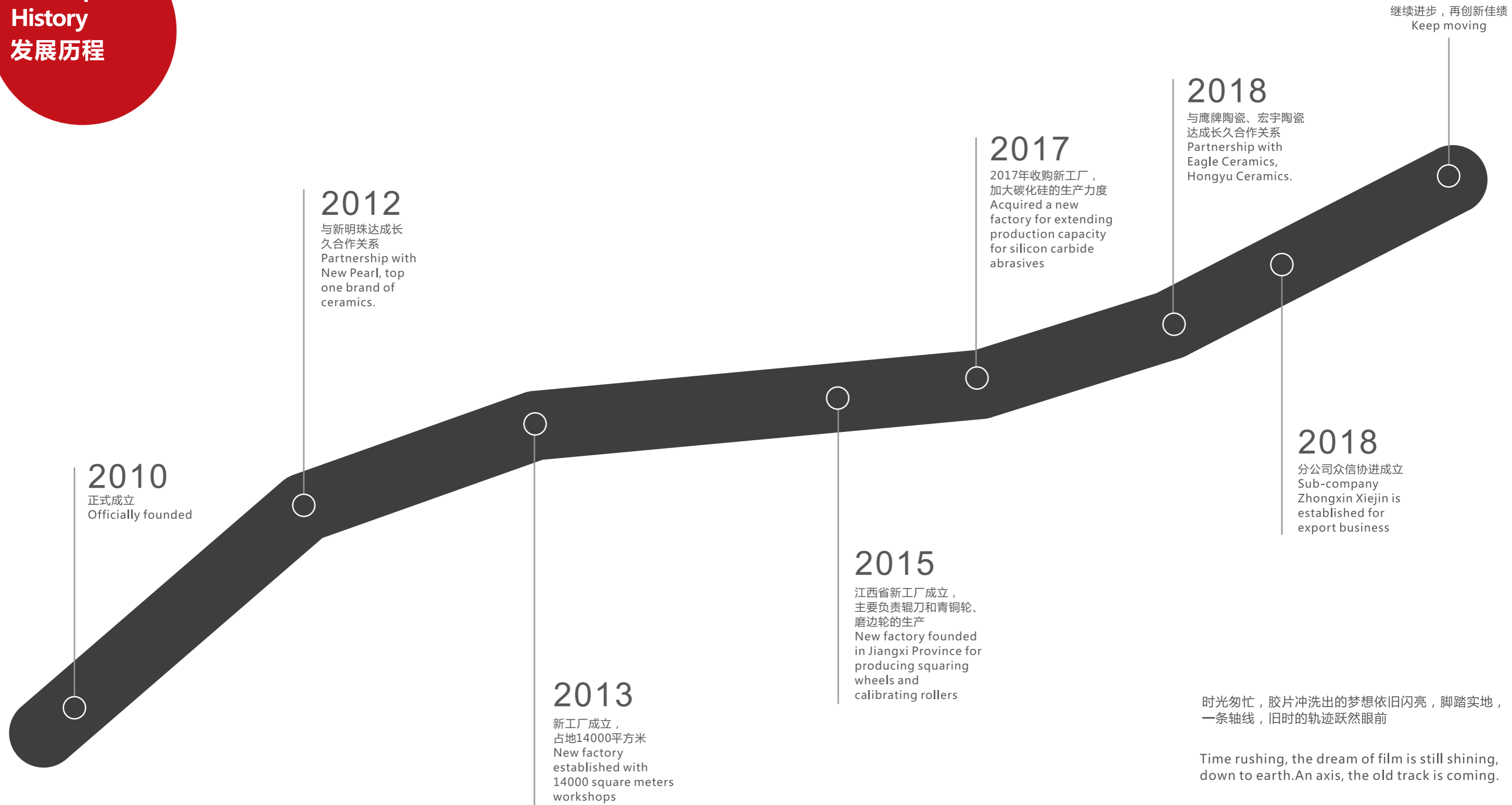
Our service  
team  
我们的团队

人生追求事业而色彩斑斓,事业因奋斗不息而波澜壮阔,奋斗因志同道合而一路前行,一群有共同价值观的协进人凝聚在一起,为开创绚丽多彩的协进事业锲而不舍,为实现协进事业新辉煌而奋勇前行.

Life is full of colors in pursuit of career, career is full of magnificence because of constant struggle, struggle is full of common aspirations and common values. The collaborators gathered together to forge ahead for a brilliant and colorful cause of cooperation and to achieve a new glory of the cause.



Development History  
发展历程



Segments workshop  
刀头车间



每一块刀头都是从搅粉开始，直至900度高温中烧出，再经过经验丰富的协进师傅手中制造完成。每一个生产工序都有着完善的控制方法，工序之间是以“下一个工序即系客户”的理念进行严格的控制，且由专业的协进质量人员负责对工序和产品质量进行严格的把控。

Each segment production is started by powder until shape finished from 900 degree temperature. Then through our experienced staff, the segments will be ready for next procedure. Each procedure is under strict quality control under the idea of "The next procedure is customer".



Lapato abrasive workshop  
弹性磨块车间

协进的弹性磨块车间集成了自动化设备，以更快速的响应客户的交期，应变月超500,000个的产量。

XIEJIN' s Lapato abrasive workshop produces more than 500,000 pieces per month, we integrated with an automation machine and open another new workshop for catching up the lead time of our customers and handled large production output.



Calibrating roller  
and squaring wheels  
辊刀以及  
磨边轮加工



术业有专攻 技术更先进  
Staff could be master in his  
own special field.

协进辊刀以及磨边轮加工制造车间，依靠深厚的研发制造基础，为产品的开发和制造提供极大的优势，近100人的专业研发团队，经验丰富，准确把我新产品的技术难点和生产工艺要求，为产品的高要求标准化生产奠定技术基础。



Relying on the 10 years experience and the strong R&D team, XJ Abrasive is providing high quality tools for partners, improving new technology development, provide good service for long term partnership.

Silicon carbide  
abrasive plant  
碳化硅车间

强大的生产能力

Strong production capacity, faster lead time



monthly production  
more than  
**1,500,000pcs**

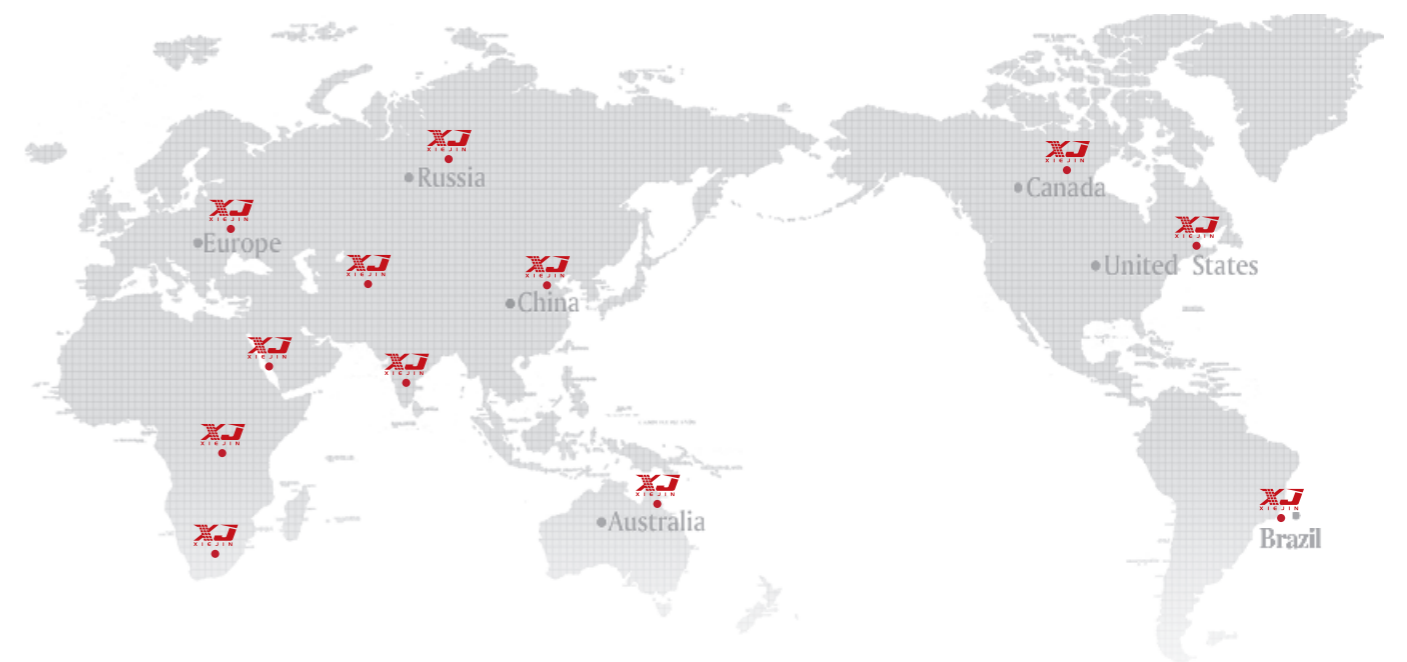


Warehouse and logistics  
仓库及物流现场

强大的物流体系  
Strong integrated logistics system



Long term partners  
合作伙伴



拥有完善的售后服务管理体系，细分到专业客服人员跟进，为客户提供一对一支持，承诺在最短的时间内帮助客户解决问题。

XIEJIN have the complete after-sales service system, provide one-on-one service for our clients, struggling to help our cilents to solve the problems in the soonest time.



14

CALIBRATING ROLLER  
刮平定厚工具

15-16 金刚石辊刀  
Diamond Calibrating Roller

17

SQUARING WHEELS  
磨边工具

19-20 金刚石磨边轮  
Diamond squaring wheel

23-24 青铜轮  
Continuous Rim squaring wheel

Product  
catalogue  
产品目录

21-22 树脂修边轮  
Resin squaring wheel

25-26 倒角轮  
Chamfering wheels

POLISHING ABRASIVE  
抛光工具

27

弹性磨块 29-30  
Glaze polishing abrasive

金刚石磨块 31-32  
Diamond Fickert

树脂磨块 33-34  
Resin Bond Diamond Fickert

碳化硅磨块 35-36  
Silicon Carbide abrasive

OTHER RELATED TOOLS  
其他配套工具

37

纤维磨块 37  
Fiber Grinding Abrasive

刀头 38  
Segments

石材磨具 39  
Frankfurt Diamond Fickert

马蹄石材磨块 40  
Frankfurt Diamond Fickert

研磨刷 41  
Grinding brush

防污纳米液 42  
Anti-fouling NANO Liquid

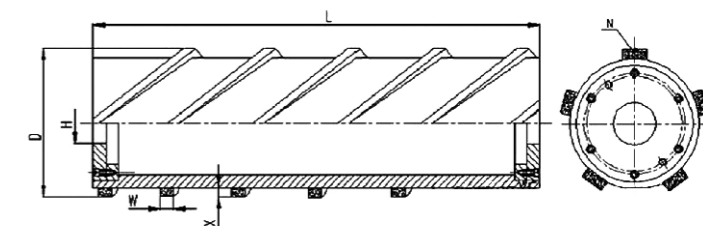
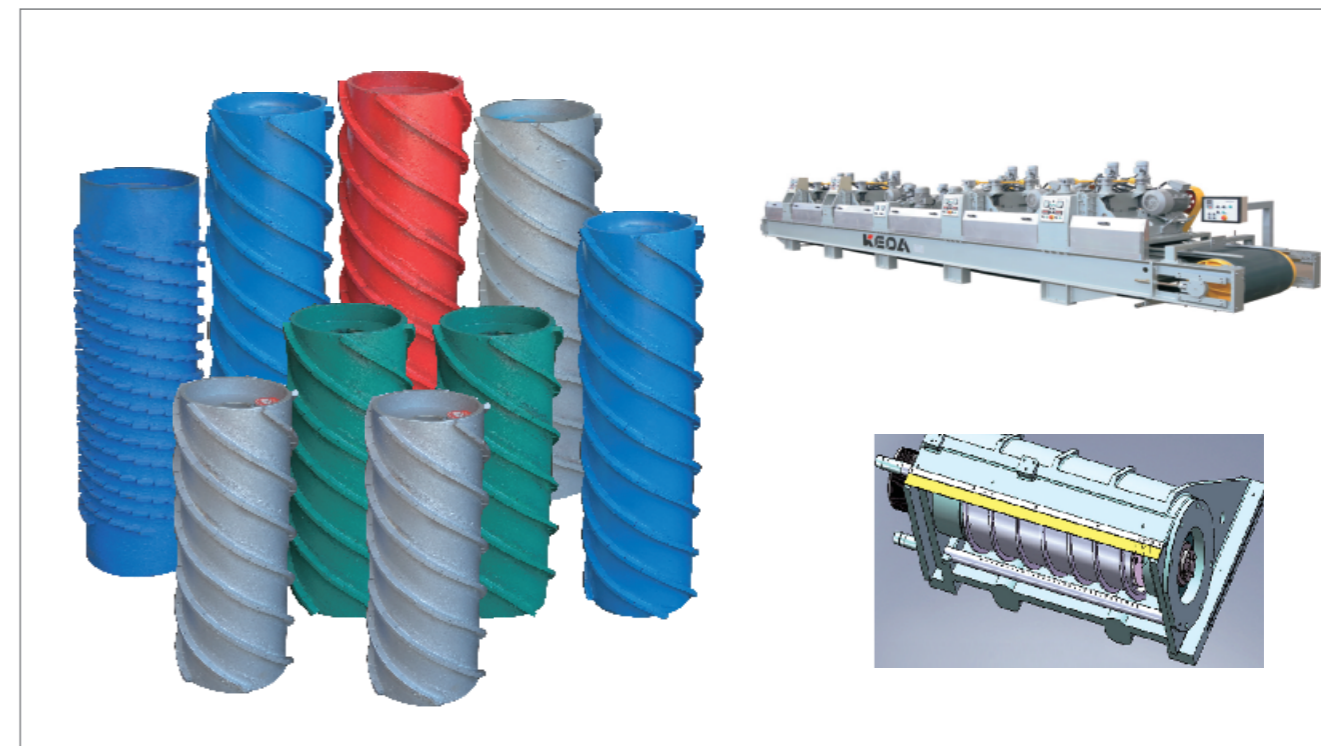
CALIBRATING ROLLER  
刮平定厚工具



## 金刚石辊刀系列 DIAMOND CALIBRATING ROLLER

金刚石辊刀是目前陶瓷加工最常用的工具之一，主要用于陶瓷砖坯抛光前的刮平定厚，我司采用最新的配方技术和先进的生产工艺，所生产的金刚石辊刀具有锋利度高、寿命长、使用能耗低、工作噪音少、质量稳定、加工效果好等特点。金刚石辊刀分为平刀，锯齿刀和变形刀。

Diamond calibrating roller is most commonly used to calibrate and achieve a uniform thickness on ceramic tiles surface before polishing. Thanks to the continuous technical improvement and the feedback from our customers, our diamond calibrating rollers are approved for their good sharpness, long working life time, low energy consumption, low working noise, excellent working effect and stable performance. There are Saw tooth, flat tooth and deformation roller.



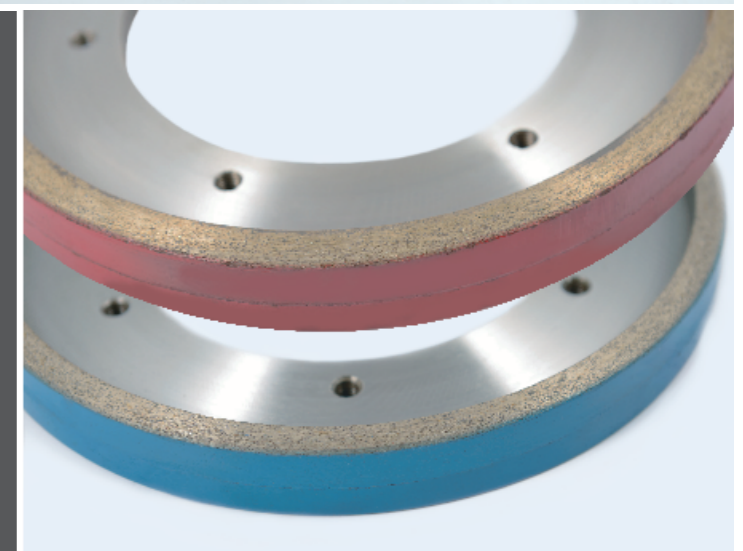
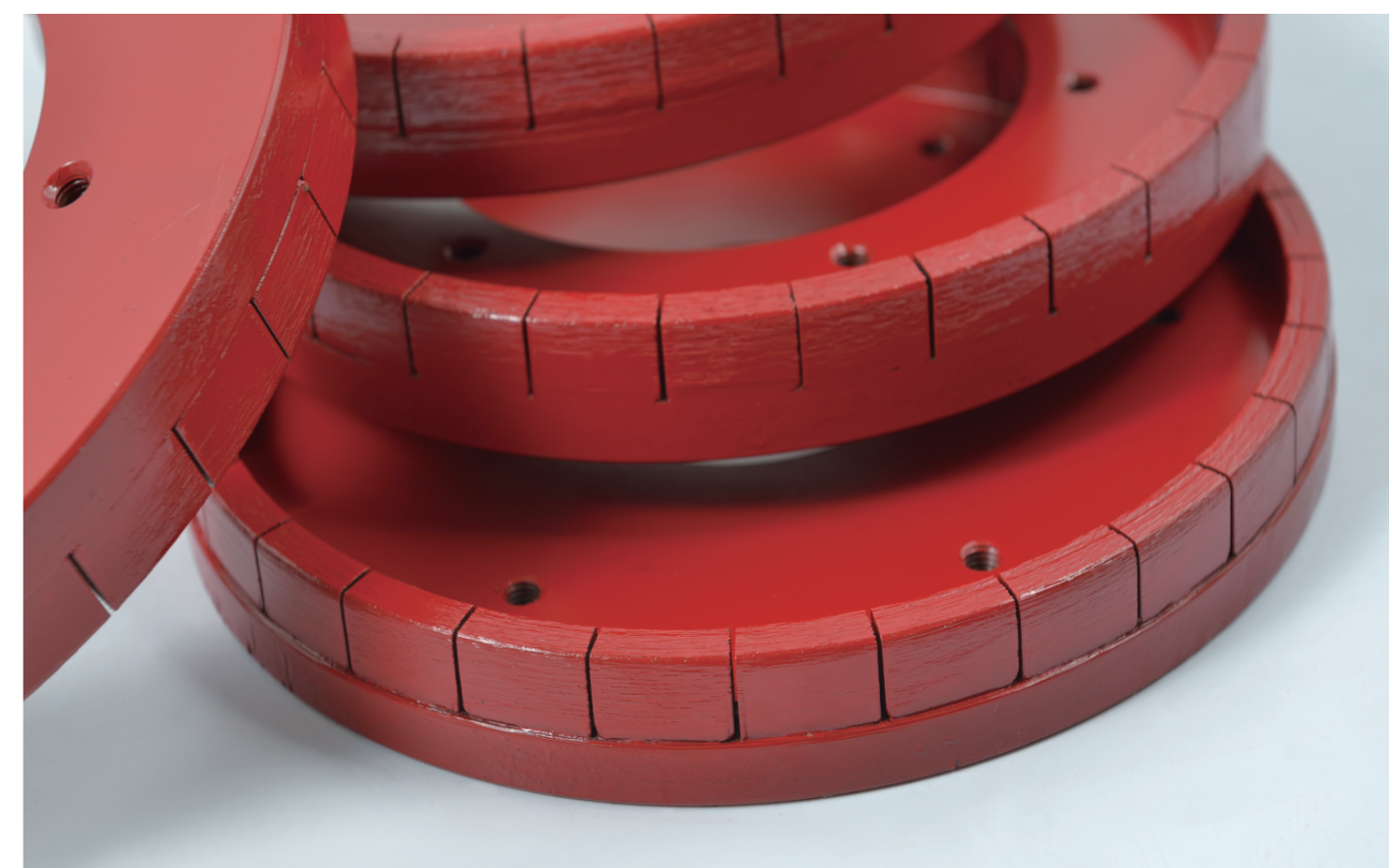
常用规格及相关参数  
Spec and parameter

External diameter 外径	Length 长度	线数 SPIRALS	Segments Size 刀头尺寸(W*H)	Grit 粒度
180 ~ 320	595	5/6/7/12/16	9*12/15 10*12/13/14	30# 40# 50# 60# 70# 80# 100# 120#
	645 (585)			
	800(680)			
	800(740)			
	995(935)			
	1195(1135)			
	1600(1540)			

Remark: Customization is available upon request.  
根据使用设备种类不同，可依据要求定制。

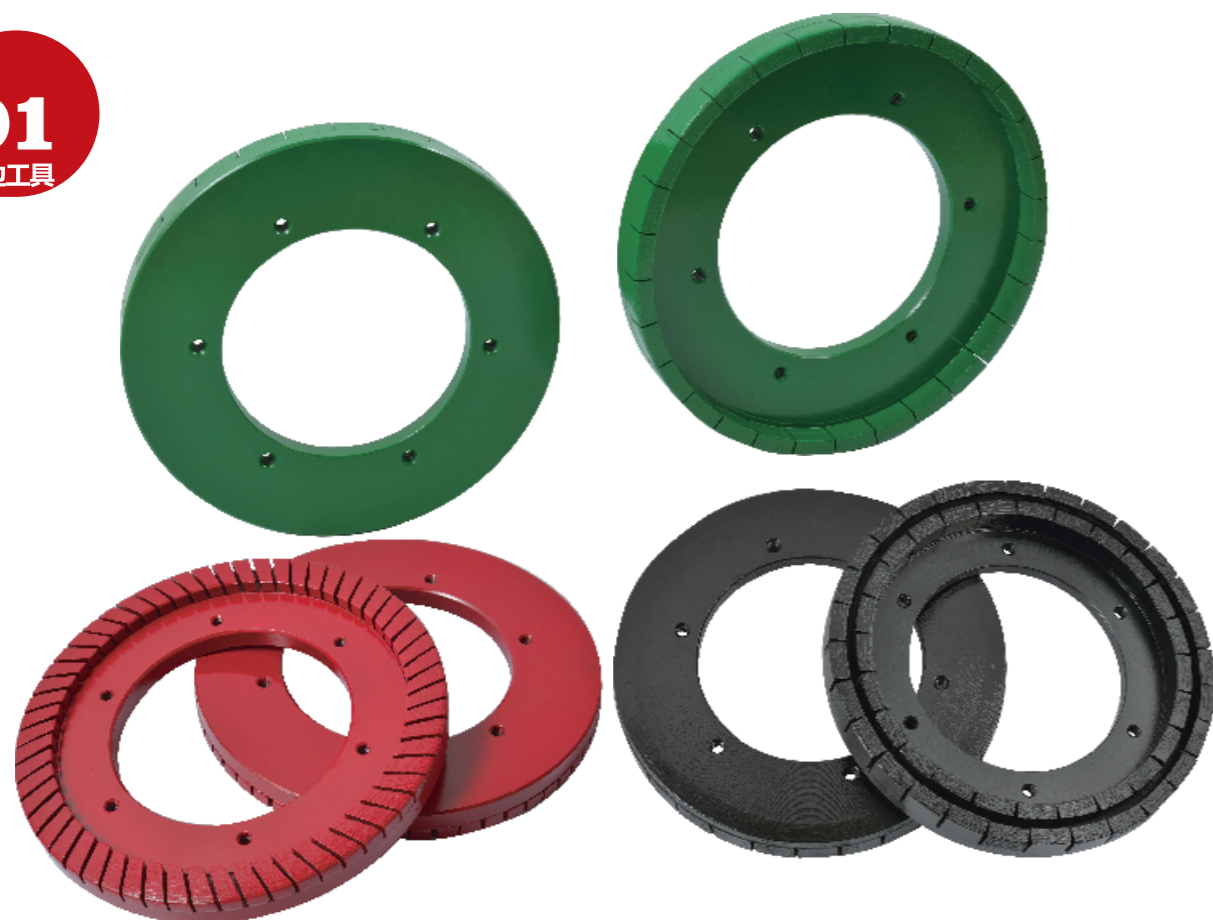


**SQUARING WHEELS**  
**磨边工具**



## 金刚石磨边轮 DIAMOND SQUARING WHEEL

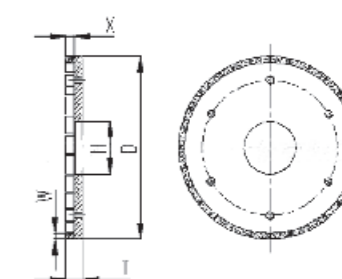
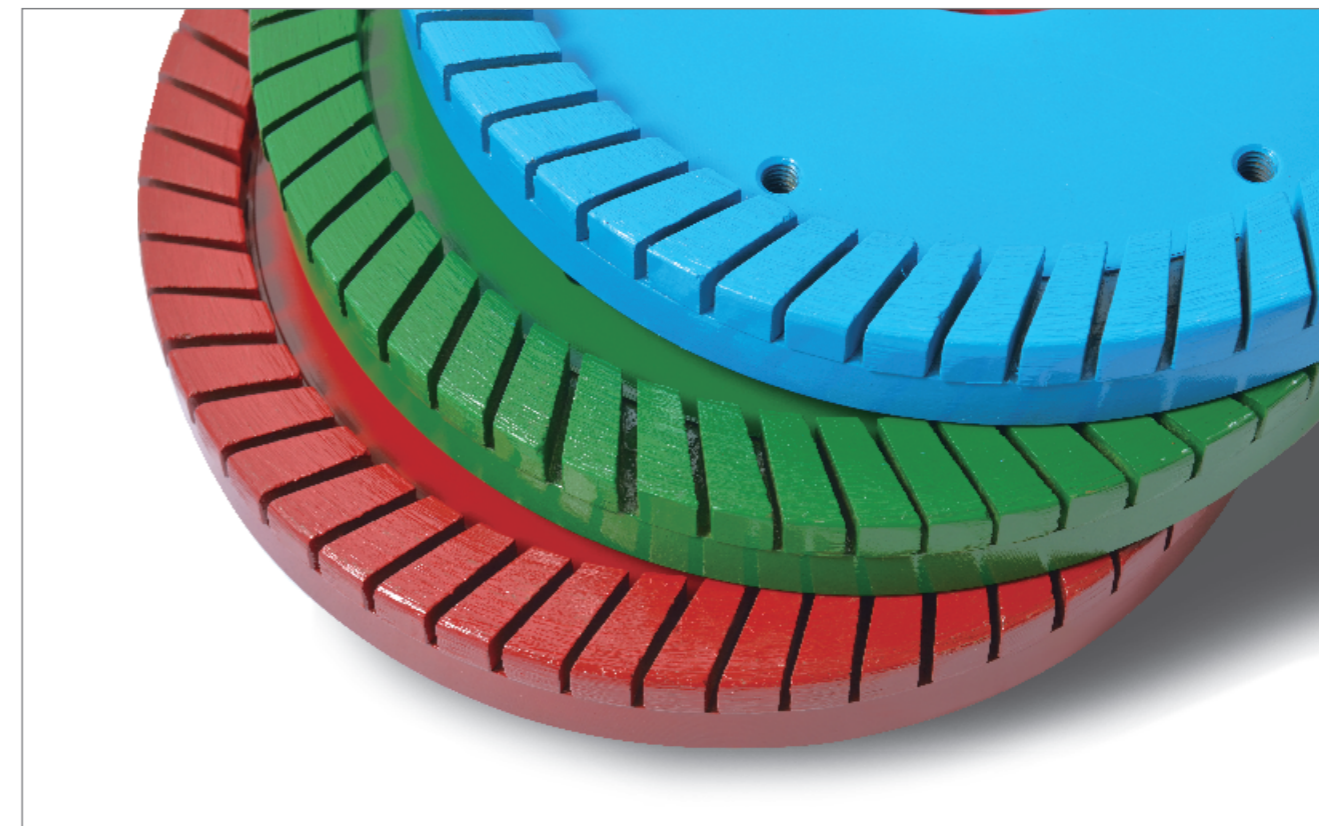
01  
磨边工具



金刚石磨边轮主要用于修正瓷砖周边的垂直度并获得设定的尺寸，是各种大规格陶瓷水晶砖、资质砖、抛光砖磨边的必需工具，分为干磨轮和水磨轮。主要有以下特点：

There are dry and wet processing for diamond squaring wheels, it's with below excellent advantages:

- |  |   |
|--|---|
| <ol style="list-style-type: none"> <li>1. 锋利度好，使用寿命长、噪音少。</li> <li>2. 很好的保证了加工差评的垂直度以及尺寸要求，不崩面、不崩角。</li> <li>3. 生产工艺控制严格，产品质量稳定。</li> <li>4. 针对不同的砖质选择合理的配方、粒度搭配。</li> </ol> | <ol style="list-style-type: none"> <li>1, Excellent sharpness, long lifetime and lower working noise.</li> <li>2, Excellent in verticality and size without breaking and chipping on tiles.</li> <li>3, Strict Production process control and stable quality</li> <li>4, Select the suitable formulation and grit matching according to different tiles.</li> </ol> |
|--|---|



常用规格及相关参数  
Spec and parameter

External diameter 外径	Inner Diameter 内径	Mounting hole QTY 装配孔数量	Distance between holes 孔距	Segment size 刀头尺寸
150	30/32/50/80	3/4/6	60/80	8/9/10*10/12/14
200	50/80/140	4/6/12	105/110/165/180	8/9/10*10/12/14
250	50/80/140	4/6/12	105/110/165/180	8/9/10*10/12/14/22
300	50/80/140	4/6	105/110/165	8/9/10*10/12/14

Remark: Customization is available upon request.  
根据使用设备种类不同，可依据要求定制。

## 树脂修边轮 RESIN-BOND DIAMOND SQUARING WHEEL

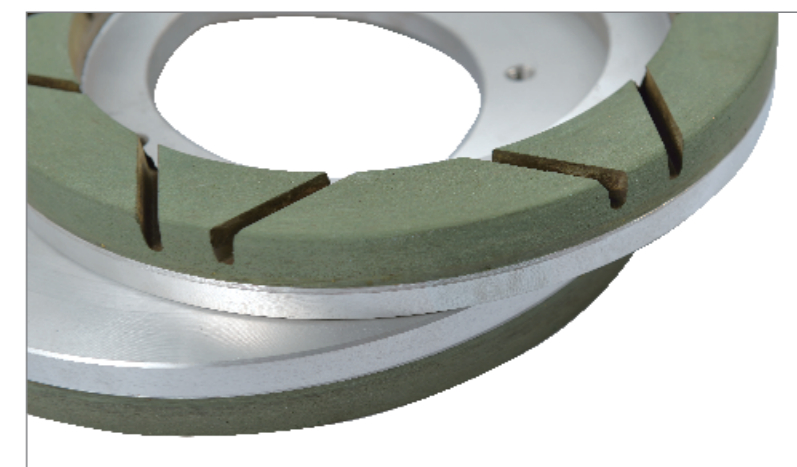
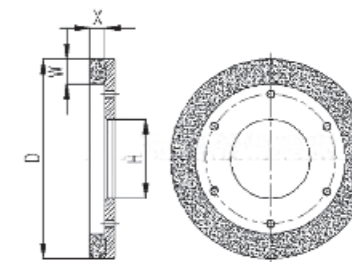


**02**  
磨边工具

树脂结合金刚石盘式修边轮适用于陶瓷砖的精细磨边，加工尺寸精度高，磨边平直光滑。按刀头的结构可以分为连续式磨边轮和水槽式磨边轮。



It's used to make the edges of ceramic tiles more flat, smooth and high precision size. There are two types of resin-bond diamond squaring wheels: Continuous Rim and Working layer with flume.



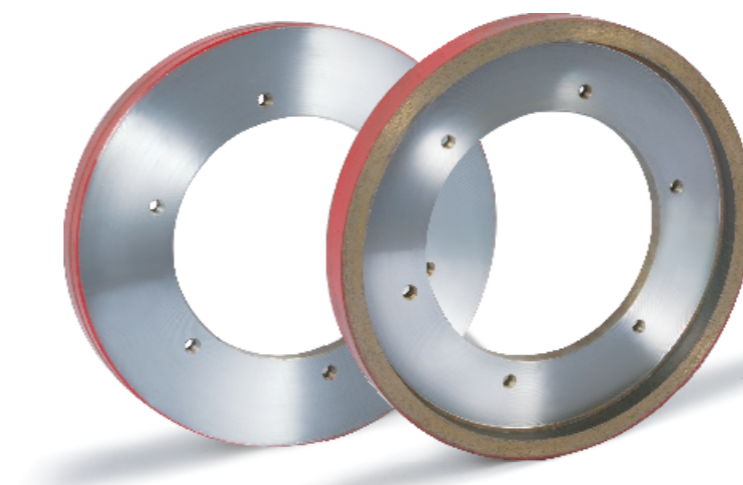
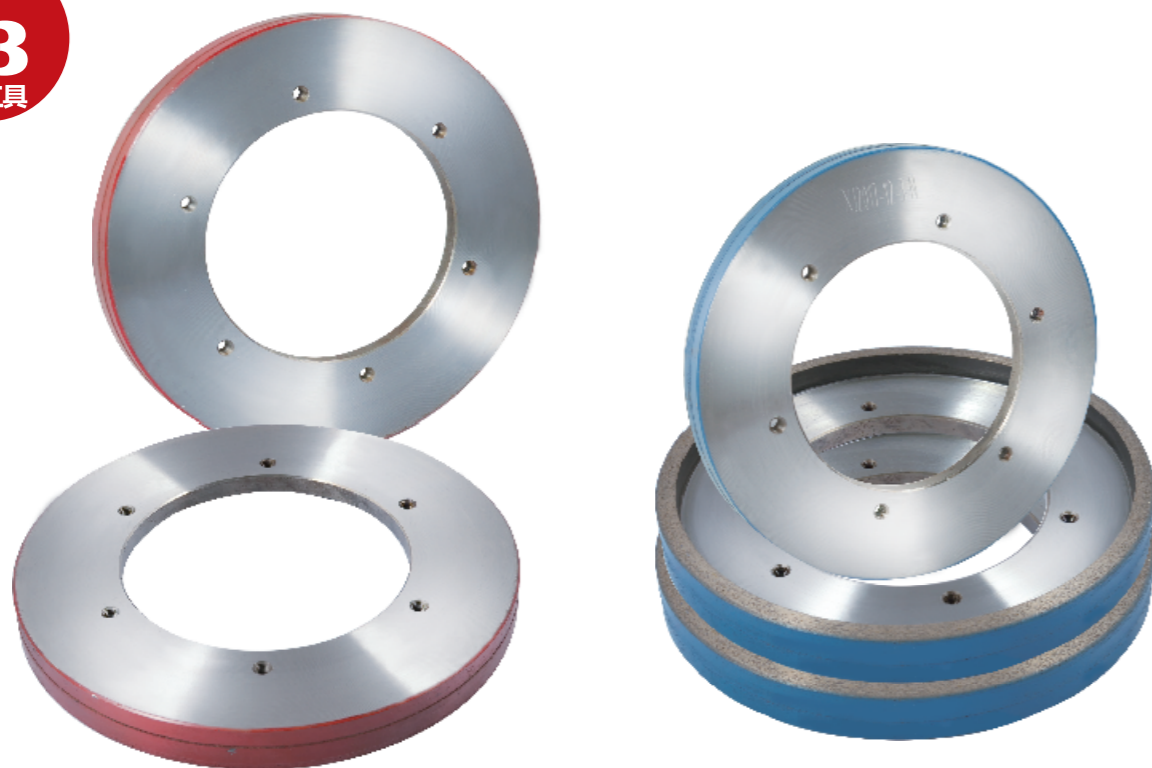
常用规格及相关参数  
Spec and parameter

External diameter 外径	Inner Diameter 内径	Mounting hole QTY 装配孔数量	Distance between holes 孔距	Segment size 刀头尺寸
150	80	6/12	105/110	25/30*15
200	50/80/140	6/12	105/110/165/180	25*15
250	50/80/140	6/12	105/110/165/180	40/35/30/25*15

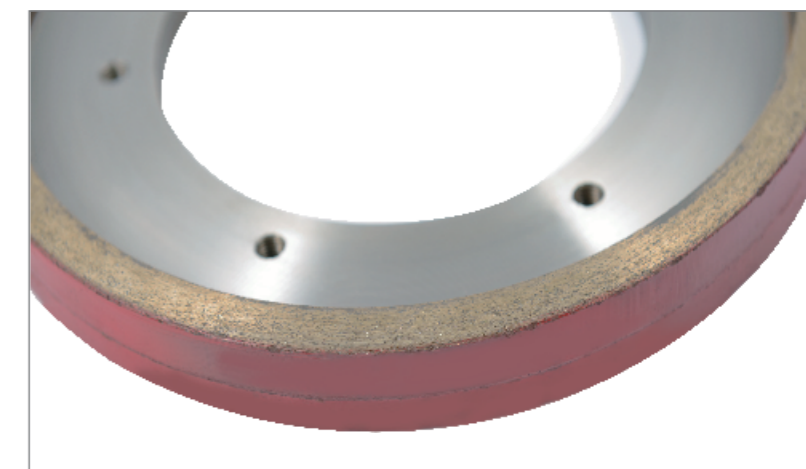
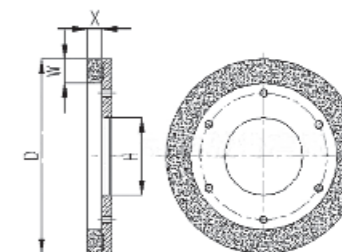
Remark: Customization is available upon request.  
根据使用设备种类不同，可依据要求定制。

## 青铜轮 CONTINUOUS RIM SQUARING WHEEL

03  
磨边工具



- 1, Excellent sharpness, long lifetime and lower working noise.
- 2, Excellent in verticality and size without breaking and chipping on tiles.
- 3, Strict Production process control and stable quality
- 4, Select the suitable formulation and grit matching according to different tiles.



青铜轮是整体式磨边轮，主要用于修正瓷砖周边的垂直度并获得设定的尺寸，是各种大规格陶瓷水晶砖、资质砖、抛光砖磨边的必需工具。主要有以下特点：

Continous Rim squaring wheel is with below excellent advantages:

1. 锋利度好，使用寿命长、噪音少。
2. 很好的保证了加工差评的垂直度以及尺寸要求，不崩面、不崩角。
3. 生产工艺控制严格，产品质量稳定。
4. 针对不同的砖质选择合理的配方、粒度搭配。

常用规格及相关参数  
Spec and parameter

External diameter 外径	Inner Diameter 内径	Mounting hole QTY 装配孔数量	Distance between holes 孔距	Segment size 刀头尺寸
150	30/32/50/80	3/4/6	60/80/105/110	8/9/10*10/12/14
200	50/80/140	4/6/12	105/110/165/180	8/9/10*10/12/14
250	50/80/140	4/6/12	105/110/165/180	8/9/10*10/12/14
300	50/80/140	4/6	105/110/165	8/9/10*10/12/14

Remark: Customization is available upon request.  
根据使用设备种类不同，可依据要求定制。

## 倒角轮 CHAMFERING WHEELS

**04**  
磨边工具

倒角轮是用于陶瓷砖倒角的磨具。主要用于瓷砖在磨边之后的倒角，利于瓷砖在储存运输和安装过程的安全以及安装使用者的安全。分为碳化硅倒角轮和树脂倒角轮。



## CHAMFERING WHEELS

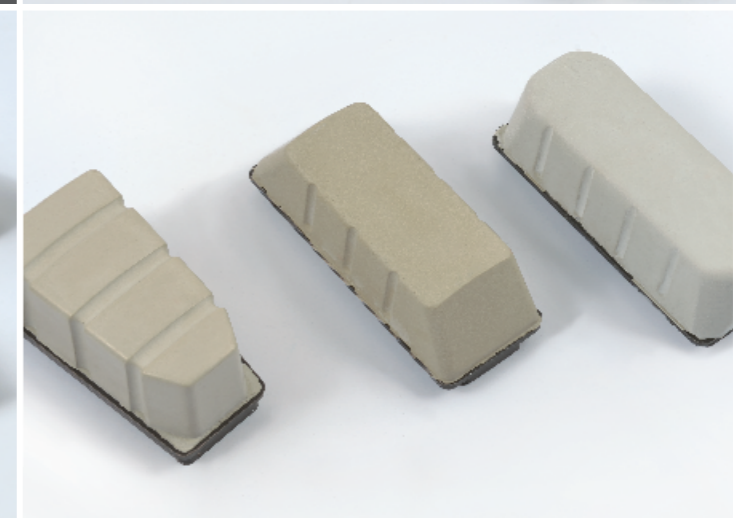
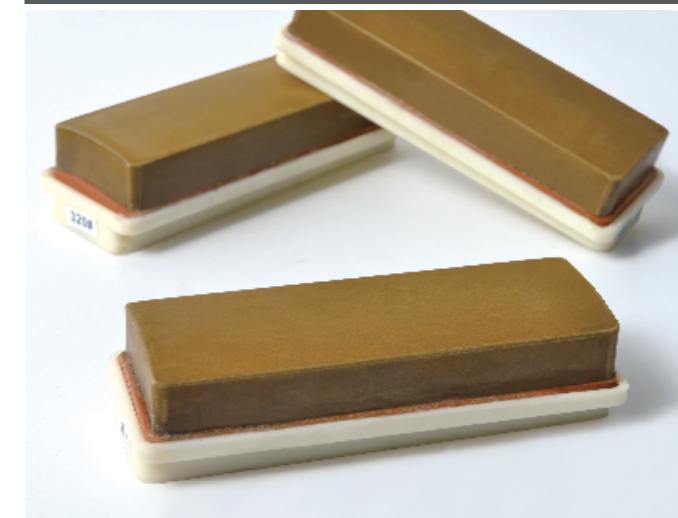
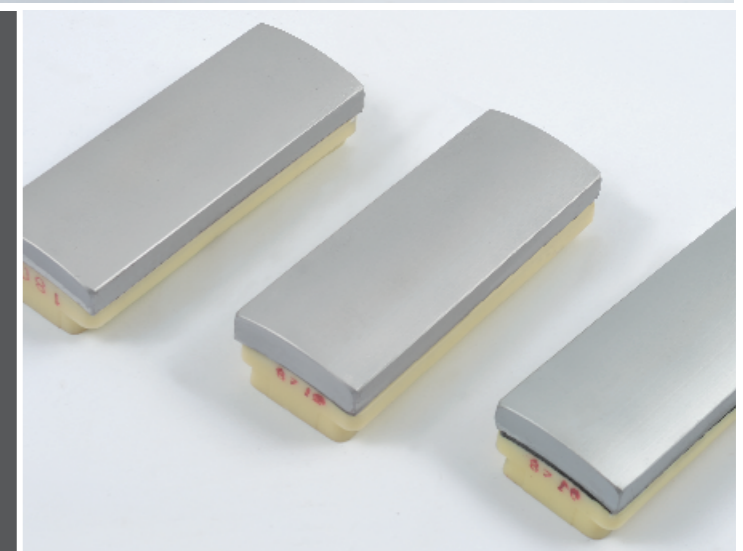
Chamfering wheel is used to make chamfering after squaring on ceramic tiles, the function is to guarantee the safety in transportation and usage. There are Resin-bond Silicon carbide chamfering wheel and Resin-bond diamond chamfering wheel.



常用规格及相关参数  
Spec and parameter

Product name 名称	External Diameter 外径	Segment size 刀头尺寸
树脂倒角轮 Resin chamfering wheel	120/125	40*12/15
碳化硅倒角轮 Silicon chamfering wheel	125	25*15
	125	40*18
金刚石倒角轮 Diamond Chamfering wheel	120/125	40/45*12/15

Remark: Customization is available upon request.  
根据使用设备种类不同，可依据要求定制。



POLISHING  
ABRASIVE  
抛光工具

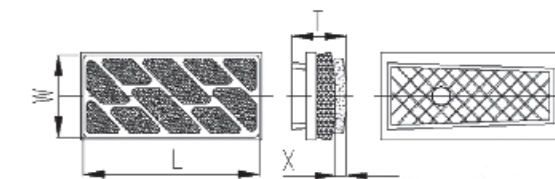
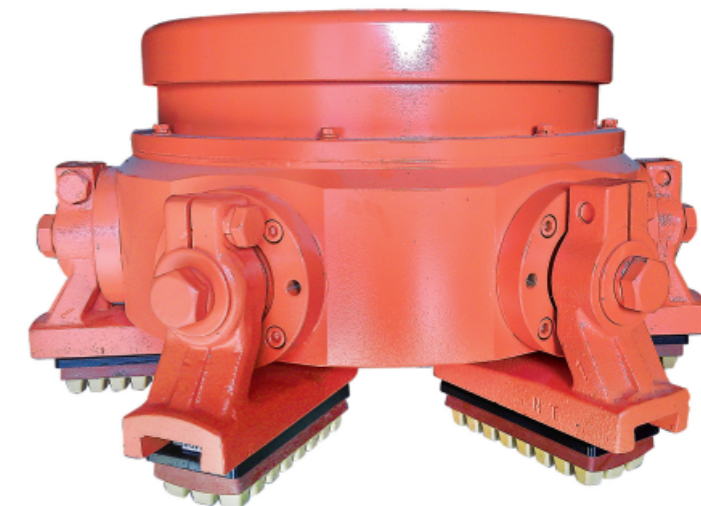
## 弹性磨块 GLAZE POLISHING ABRASIVE

01  
抛光工具



抛釉磨块又称弹性磨块。可安装于普通抛光机上，对仿古砖、仿石砖、抛晶砖、釉面砖等进行砖面的仿形全抛光或半抛光加工。具有仿形好、磨削力强、抛光光泽度高、无磨痕及使用寿命长的特点。

Glaze polishing abrasives are used on normal polishing machines to make flexible full-polishing and semi-polishing on the surfaces of rustic tiles, stone-like porcelain tiles, crystal-effect polished porcelain tiles and glaze tiles. Our glaze polishing abrasives are approved for their excellent shaping effect, good sharpness, high gloss and long working lifetime.



常用规格及相关参数  
Spec and parameter

Model 型号	Grit 粒度	Specification 规格	Shape 形状
L140 T1	80# 100# 120# 150# 180# 240# 320# 400# 500# 600# 800# 1000#	133*58/45*38	方齿/斜齿 Souare teeth/ beval teeth
L170 T2	1200# 2000# 3000# 5000# 8000#	164*62/48*48	

Remark: Customization is available upon request.  
根据使用设备种类不同，可依据要求定制。

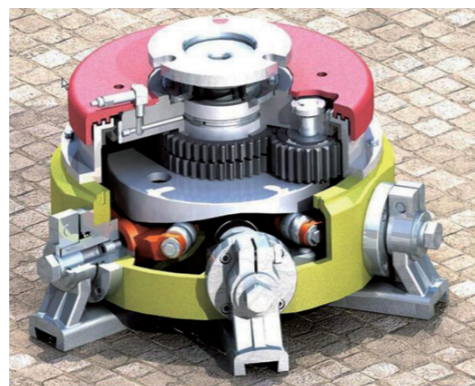
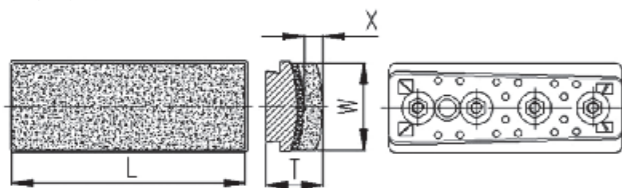


## 金刚石磨块 DIAMOND FICKERT

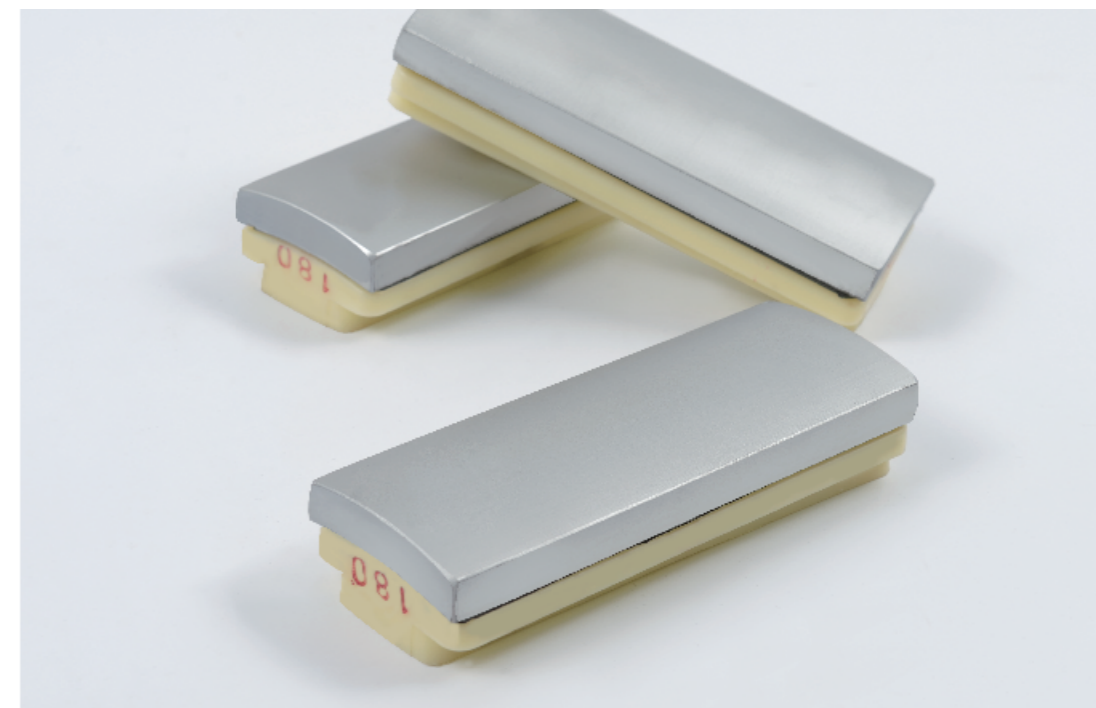
02  
抛光工具



金刚石磨块主要用于替代传统氧化镁结合碳化硅磨块对砖坯表面进行粗、中磨。最新研制的配方体系，专利技术的结构设计，先进的生产工艺，确保了金刚石磨块在磨削效率、磨削效果、先进性、经济性、可靠性方面的完美表现。



## POLISHING ABRASIVE



Diamond fickert is used to make rough and medium grinding on ceramic tiles surface in the replace of traditional silicon carbide abrasives. Our metal bond fickert are approved for the high frinding efficiency, excellent grinding effect, competitive price and performance ratio.



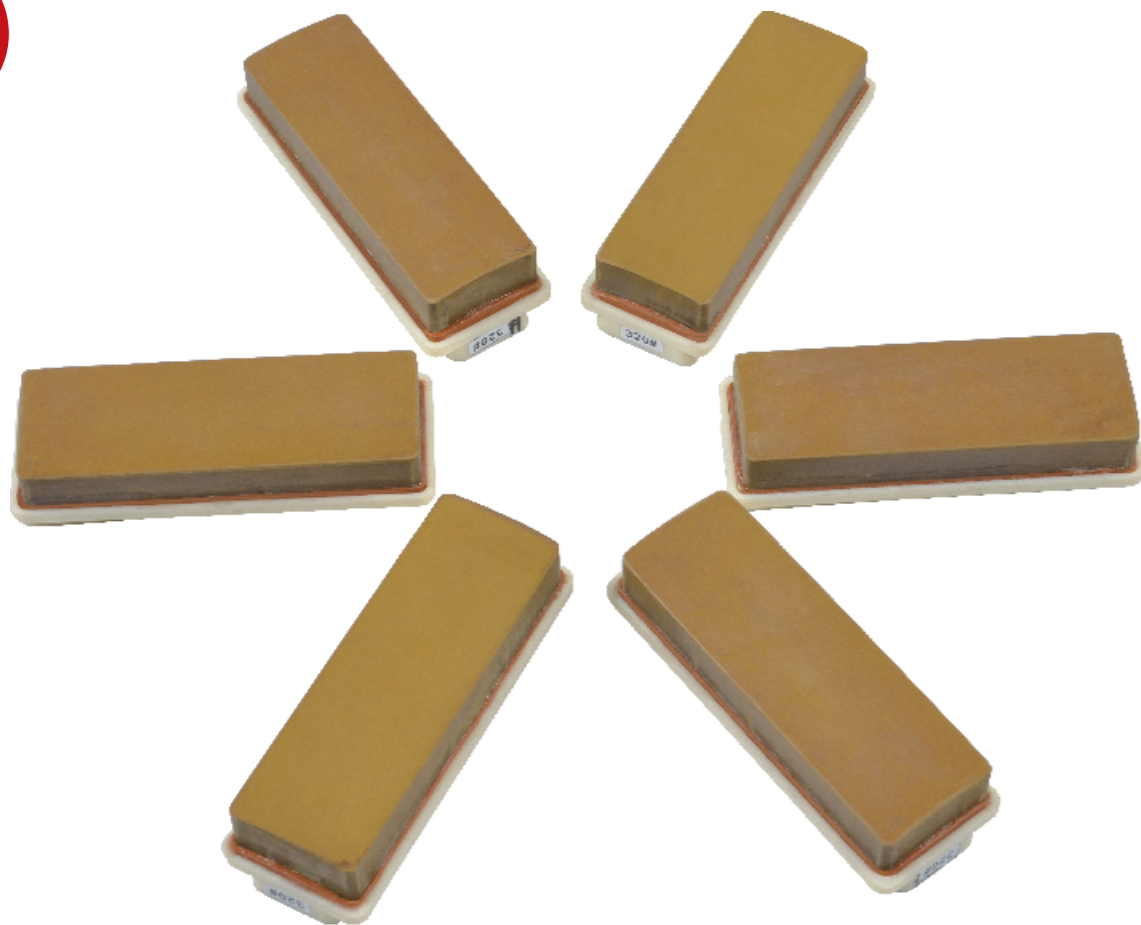
常用规格及相关参数  
Spec and parameter

Model 型号	Grit 粒度	Specification 规格	Shape 形状
L140 T1	46# 60# 80# 100# 120#	133*57*13	粗磨，中磨 Rough and Medium Grinding
L170 T2	150# 180# 240# 320#	162*59*13	

Remark: Customization is available upon request.  
根据使用设备种类不同，可依据要求定制。

## 树脂磨块 RESIN BOND DIAMOND FICKERT

03  
抛光工具

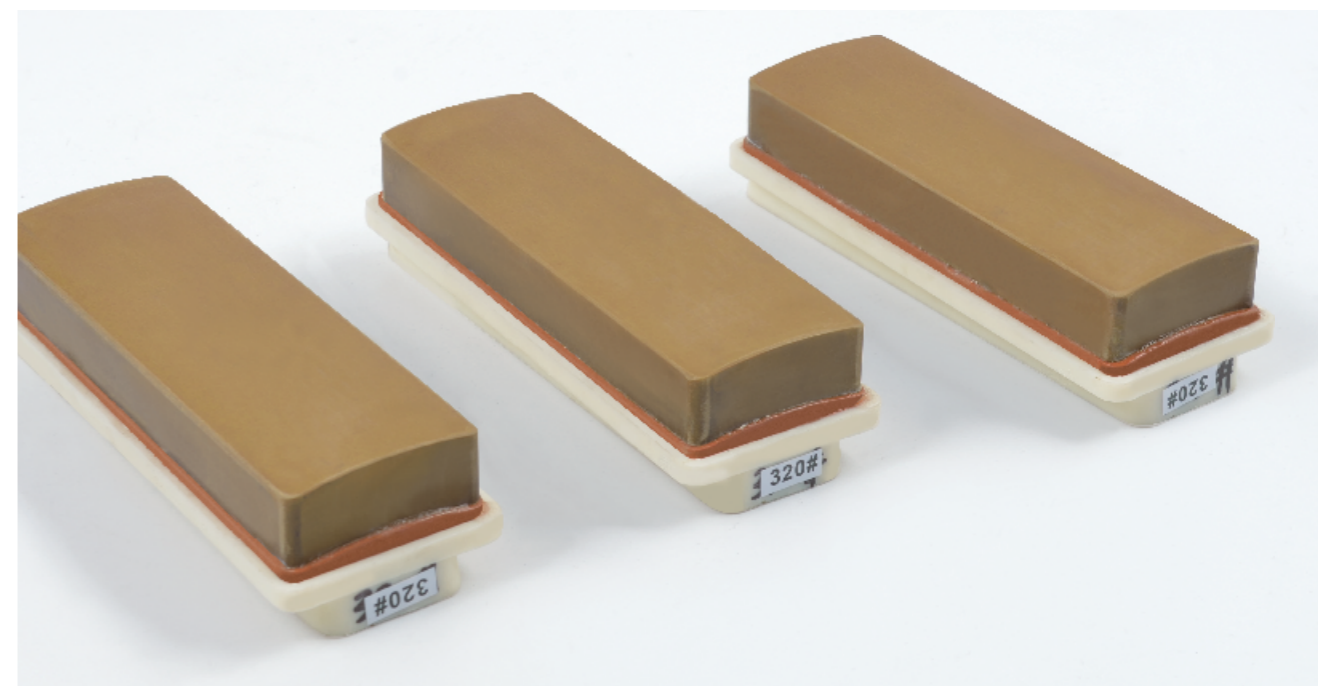


用于陶瓷抛光砖等表面的进一步细磨、精磨，能够继续提高表面光度，具有磨削效果好，使用寿命长，抛光效果好、综合成本低的特点。

Resin Bond Diamond Fickert is used to make fine and finish grinding in order to improve the gloss on ceramic tiles surface. Our resin bond diamond fickerts are approved for their excellent grinding and polishing effect, long working lifetime and competitive price and performance ratio.

驾驭常规，铸就创新。多年来，因为对品质的坚守和对精工的一如，在每个产品问世之初，质量便已成为我们必须考虑的核心环节，并且是由始至终贯穿整个技术研发，生产制造的全过程。

Quality is the core of production, procedure and our company spirit.



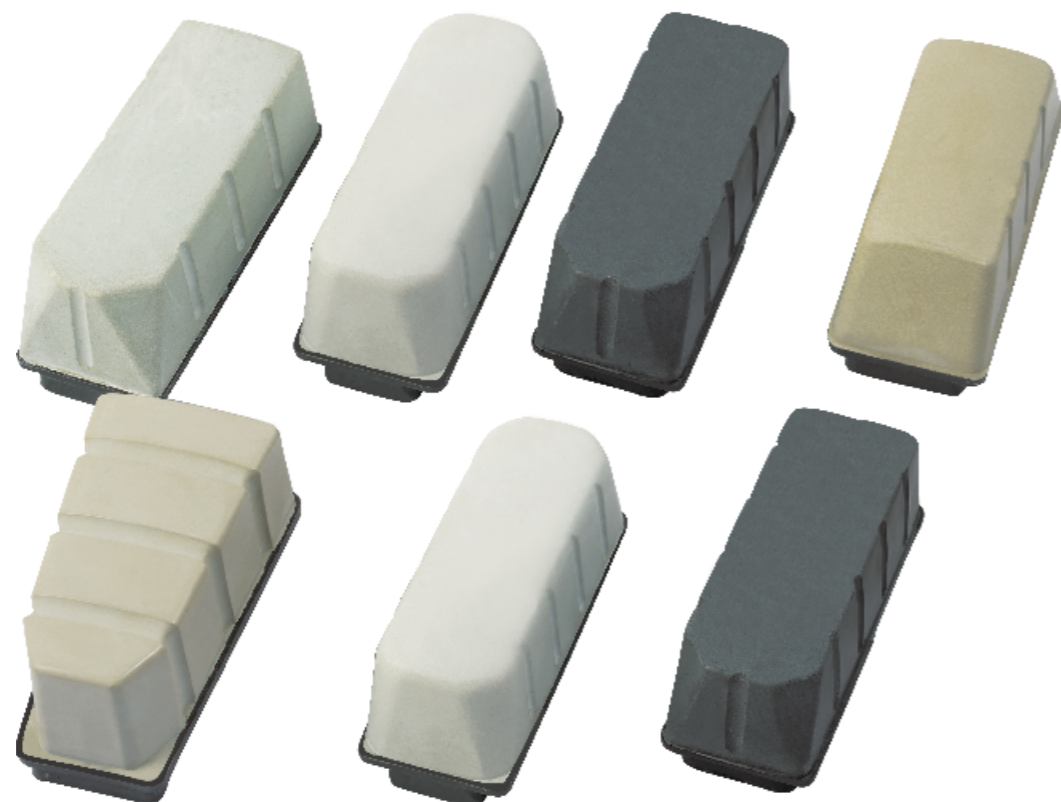
常用规格及相关参数  
Spec and parameter

Model 型号	Grit 粒度	Specification 规格	Shape 形状
L140 T1	120# 150# 180# 240# 320# 400# 500#	133*58*12 133*45*12	细磨，精磨 Fine and finished grinding
L170 T2	600# 800# 1000# 1200# 1500#	164*62*48 164*48*48	

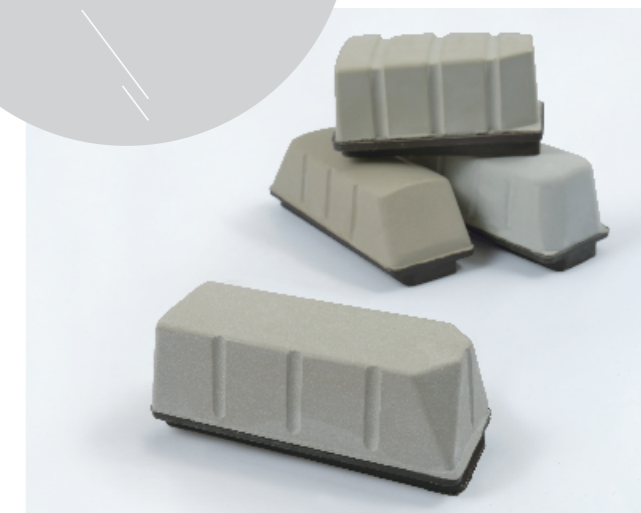
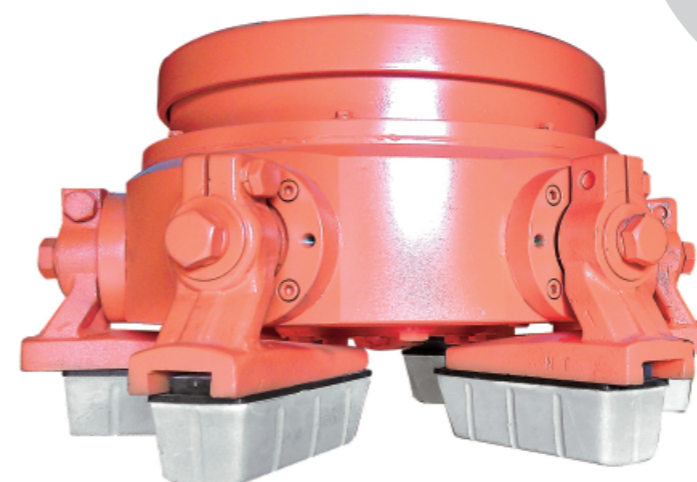
Remark: Customization is available upon request.  
根据使用设备种类不同，可依据要求定制。

## 碳化硅磨块 SILICON CARBIDE ABRASIVE

04  
抛光工具



POLISHING  
ABRASIVE



用于瓷砖表面的粗磨、中磨、细磨直到抛光，是硬脆材料抛光领域应用历史最长，应用技术最成熟的磨削、抛光材料，目前在该领域还占有很大的比例，用量较大。

Silicon carbide abrasive is used to make rough, medium and fine grinding and polishing on ceramic tiles surface. They are the traditional grinding and polishing materials with the longest history and the most mature technique in the field of hard and fragile polishing materials. Till now there is still a high ratio consumption of these traditional abrasives in the grinding and polishing of granite tiles.

常用规格及相关参数  
Spec and parameter

Model 型号	Grit 粒度	Usage 用途
L140 T1	26# 36# 46# 60# 80# 100# 120# 150# 180# 220# 240# 320# 400# 600# 800#	粗磨，中磨，细磨，精磨 Rough and medium grinding,
L170 T2	1000# 1200# 1500# 1800# 2000# 2500#	fine and last polishing

Remark: Customization is available upon request.  
根据使用设备种类不同，可依据要求定制。

## 纤维磨块 Fiber Grinding Abrasive



用于柔光砖表面的粗磨、中磨、细磨，大部分用于29°的柔光砖，是新型发展起来的比较流行的磨具，能使柔光砖砖面更立体。

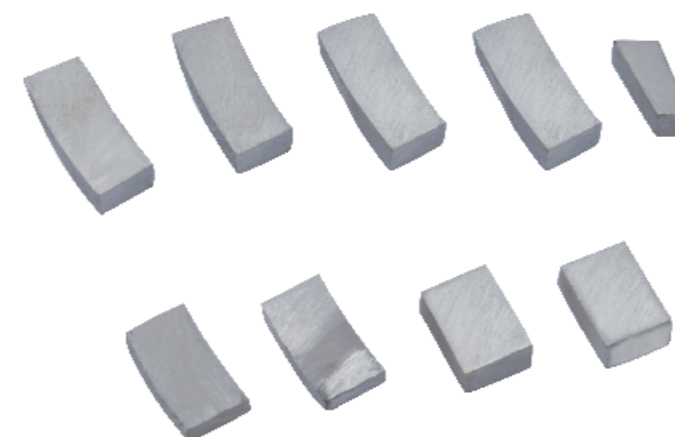
It is used for rough grinding, medium grinding and fine grinding of soft light tile' s surface. Most of it is used for 29° soft light brick. It is a new type of abrasive tool that has been developed and can make soft brick' s surface more three-dimensional.

常用规格及相关参数  
Spec and parameter

Model 型号	Grit 粒度	Usage 用途
L140 T1	180# 150# 220# 240#	粗磨，中磨，细磨，精磨 Rough and medium grinding, fine and last polishing
L170 T2	320# 400# 600#	

Remark: Customization is available upon request.  
根据使用设备种类不同，可依据要求定制。

## 刀头 Segments

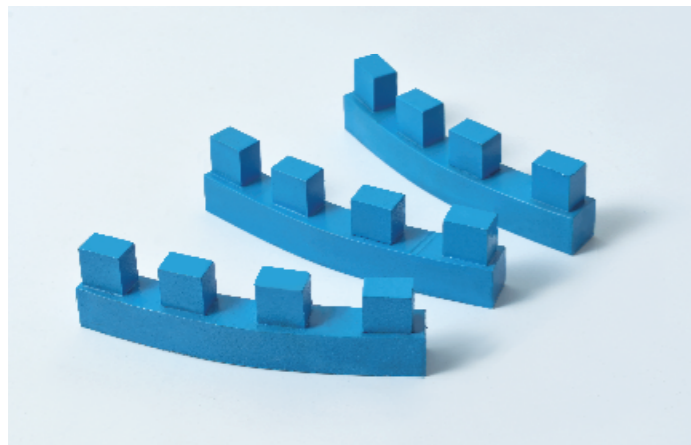


用于组装在金刚石磨边轮和金刚石辊刀上，使金刚石磨边轮和辊刀再生循环利用。

Specially used for regenerating the squaring wheel and calibrating rollers.

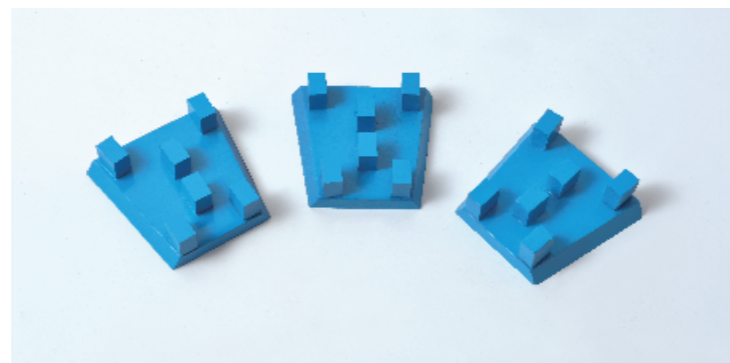
Remark: Customization is available upon request.  
根据使用设备种类不同，可依据要求定制。

## 石材磨具 Frankfurt Diamond Fickert



特别适用于天然石材，人造石英石和其他非金属材料  
的校准和厚度固定。可根据要求提供金刚石滚轮，  
磨盘和圆柱轮等。这些工具可用于所有校准研磨和  
抛光机器。

Specially used for calibrating and thickness fixing  
on natural stone, artificial quartz stone and other  
non-metal materials. Diamond roller, grinding  
plate and cylindrical wheel etc. are available upon  
requirement. These tools can be used on all  
calibrating grinding and polishing machines.



常用规格及相关参数  
Spec and parameter

Item 工具名称	Diameter 直径	Shape 形状	Segments Size 刀头尺寸	Grit 粒度
滚筒 Roller	240	螺旋状 Spiral	40.8*9*15	24# ~120#
磨盘 Grinding disc	380	单(双)排 Single/ double line	40*15*20	
	450		44*19*16	
	500		26*12*20	
	600		40*12*20	
磨条 Grinding strip	600	单排 Single line	35*20*20	
圆柱轮 Cylindrical wheel	180	锯片并列式 Pacco-disc 螺旋状 spiral 八爪鱼	40*13*8	
	200		40/36*9*10	

Remark: Customization is available upon request.  
根据使用设备种类不同，可依据要求定制。

## 马蹄石材磨块 Frankfurt Diamond Fickert



特别适用于天然石材，人造石英石和其他非金属材料的校准和厚度固定。可根据要求提供金刚石滚轮，磨盘和圆柱轮等。这些工具可用于所有校准研磨和抛光机器。

Specially used for calibrating and thickness fixing on natural stone, artificial quartz stone and other non-metal materials. Diamond roller, grinding plate and cylindrical wheel etc. are available upon requirement. These tools can be used on all calibrating grinding and polishing machines.

常用规格及相关参数  
Spec and parameter

Type 类型	Grit 粒度	Specification 规格	Usage 用途
T1	16# 24# 36# 46# 60# 80# 120# 180# 220# 240# 280#	128*80*52	花岗岩 石英石的板面磨平粗磨/中磨/精磨 Rough, medium and fine polishing on granite and quartz slabs on automatic polishing machine
T2	320# 400# 600# 800# 1000# 1200# 1500# 1800# 2500#	162*80*52	
T3	36# 46# 60# 80# 100# 120# 180# 240# 280# 320# 400# 600# 800# 1000# 1200#	104*104/84*45	大理石、人造岗石的板面磨平粗磨/中磨/精磨 Rough, medium and fine polishing on marble and artificial stone slabs on automatic polishing machine

Remark: Customization is available upon request.  
根据使用设备种类不同，可依据要求定制。

## 研磨刷 Grinding brush



又名哑光刷。此产品安装于普通抛光机上，对仿古砖、瓷质砖的平面、凹凸面和羊皮面等进行仿行哑光处理，具有使用寿命长，加工效果好（可使砖面呈丝绸缎面及仿古效果），光度在6°~30°之间。

It's also known as matte brush. This product is installed on the ordinary polishing machine, and it performs the matte treatment on the plane, concave and convex surface and the sheepskin surface of the antique brick and porcelain brick. It has a long service life and good processing effect (the brick surface can be made of silk satin and antique Effect), the luminosity is between 6° ~ 30°.

常用规格及相关参数  
Spec and parameter

Shape 形状	External diameter/Model No. 外径/型号	Grit 粒度
圆形 Round	110/130/200/250/600	24# 36# 46# 60# 80# 100# 120# 150# 220# 240# 320# 400# 600# 800# 1000# 1200# 1500# 1800#
方形 Square	L140/L170	

Remark: Customization is available upon request.  
根据使用设备种类不同，可依据要求定制。

## 防污纳米液 Anti-fouling NANO Liquid



液体A  
Liquid A



液体B/C  
Liquid B/C

用于填充抛光砖表面的微细毛孔，使抛光砖呈现持久的镜面亮丽效果，并具有持久的防霉抗污，耐磨、耐酸碱等特点，是现代抛光防污技术中不可或缺的必备材料。

It is used to fill the fine pores on the surface of polished tiles, which gives the polished tiles a long-lasting mirror effect. It has long-lasting mildew, stain resistance, wear resistance, acid and alkali resistance, etc. It is indispensable in modern polishing anti-fouling technology. Preparation materials.

常用规格及相关参数  
Spec and parameter

Name 名称	Luminosity 光度	Static friction coefficient 静摩擦系数
NANO Liquid A	95-105°	Dry干法: 0.7-0.8 Wet湿法: 0.6-0.65
NANO Liquid B	/	

Remark: Customization is available upon request.  
根据使用设备种类不同，可依据要求定制。